

ASW2367

2000 Series Wall Mount Sounder/VAD, Multi-Tone, Deep Base, RED Flash

General

The ASW2367 is a RED bodied, deep base addressable wall mount room sounder/VAD for fire alarm systems running 2000 series fire protocol. Multiple tone selection and full CPR approval ensure conformance to local regulations. The VAD has a RED lens and a flash frequency of either 0.5 or 1 Hz (selectable on installation).

The 2000 series sounder/VADs operate over a 2-wire 2000 series loop and are loop powered i.e. no external power supply is required. The ASW2367 is compatible with automatic phased-start synchronisation controlled from the fire panel, and has a IP65 enclosure.

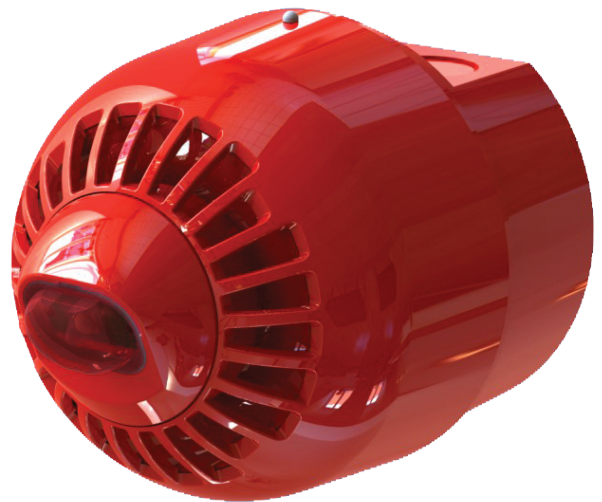
Installation

Device cabling is done to the base and allows the sounder to be fitted and locked into position afterwards. A separate earth terminal is provided in the base for connecting the screen or functional earth when required.

Efficient and versatile

These sounder/VADs can be put into different operating modes depending on local requirements. They provide high sound output at a low current, thus reducing power standby requirements and overall system cost. They are supplied with high/low volume settings as standard, allowing final audio adjustments to be made during installation. The sounder is tone selectable during installation. 32 tone settings are available.

The VAD flash rate can be set during installation to 1 Hz for normal applications or, for power conservation, to 0.5 Hz, reducing the power requirements of the unit.



Details

- Loop powered
- High sound output with low current consumption
- Multiple tone, output volume and varying flash frequency selection
- Suitable for multiple stage evacuation with up to 3 pre-set tones
- Automatic synchronisation for sounders and VADs
- IP65 rated
- CPR certified to EN54:3 and EN54:23

ASW2367

2000 Series Wall Mount Sounder/VAD, Multi-Tone, Deep Base, RED Flash

Technical specifications

General

Compatibility	Aritech 2000 series systems
---------------	-----------------------------

Electrical

Switch on surge	<1.2 mA
Operating voltage	17 to 32 VDC
Current consumption	310 μ A (Quiescent @ 24 VDC) 5.1 mA (Sounder ON @ 24 VDC) 20 mA @ 0.5 Hz / 40 mA @ 1Hz (Beacon ON @ 24 VDC)
Cable size	0.28 mm ² to 2.5 mm ²

Sounder

Output level	97 \pm 3 dB(A) @ 1 m @ 90° (Tone and voltage dependent)
Output level adjustment	8 dB
Frequency	400 - 2850 Hz (Tone and voltage dependent)
Selectable tones	32
Synchronization	Automatic
No. of stages	3

VAD

Colour	Red
Rating	W-3-7.49
Floor coverage	56 m ²
Flash frequency	0.5 or 1 Hz
Synchronization	Automatic

Physical

Physical dimensions	100 x 104 mm (Ø x H)
Net weight	345 g
Colour	Red
Mounting type	Wall mount
Mounting position	Base
Mounting height	Up to 3 m
Mounting base	Deep
Material	High impact polycarbonate

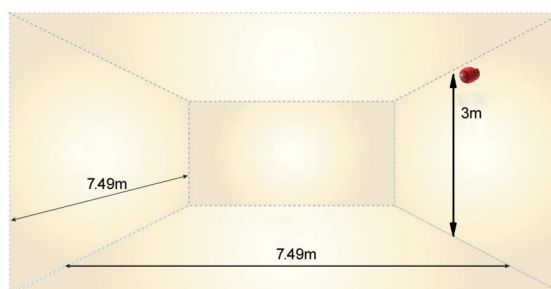
Environmental

Vandal proof	No
Operating temperature	-10 to +55°C
Storage temperature	-10 to +55°C
Relative humidity	5 to 95% noncondensing
Environment	Outdoor
IP rating	IP65

Regulatory

Compliance	CE, REACH, RoHS 2, WEEE
Certification	EN54-23, EN54-3

EN54-23 Coverage: W-3-7.49



As a company of innovation, Carrier Fire & Security reserves the right to change product specifications without notice. For the latest product specifications, visit firesecurityproducts.com online or contact your sales representative.

Last updated on 7 April 2023 - 14:09