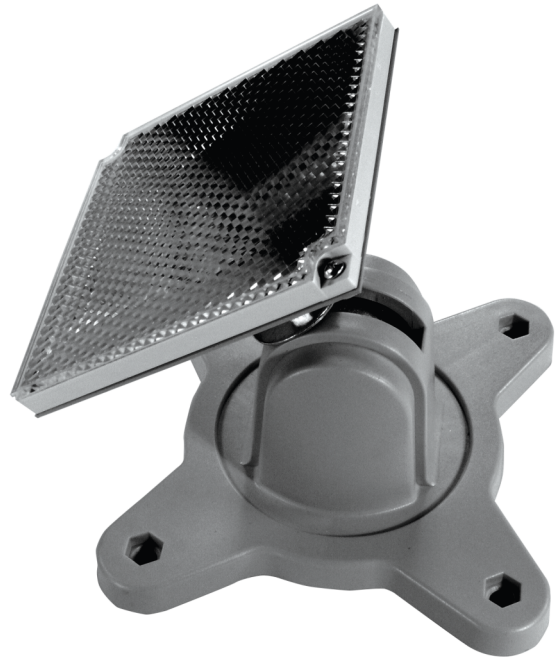


FD-MB30

Mnt Bracket Prism x1 for use with FD-MB20, prism not included

General

The FD-MB30 is used in conjunction with the FD-MB20 to mount a reflective prism at an off perpendicular axis. It allows for easy adjustment to ensure that the required angle between 0° and 45° can be achieved. It can be mounted vertically or horizontally.



Details

- Easy adjustable
- 0° to 45° range

FD-MB30

Mnt Bracket Prism x1 for use with FD-MB20, prism not included

Technical specifications

Physical

Mounting type	Surface mount
---------------	---------------

Environmental

Environment	Indoor
-------------	--------



As a company of innovation, Carrier Fire & Security reserves the right to change product specifications without notice. For the latest product specifications, visit ie.firesecurityproducts.com online or contact your sales representative.

Last updated on 4 May 2023 - 17:07